

# 10<sup>th</sup> Annual Gala

June 25, 2016

## Live Auction Preview Catalogue



MUSEUM of  
NORTHERN  
ARIZONA

*Celebrating the Colorado Plateau*

*Saturday, June 25, 2016*

---

*5:00 pm* **Cocktails, Silent Auction,  
Exhibit Preview**

*6:30 pm* **Seated Dinner, Live Auction**

---

The Gala Weekend is the Museum's main fundraiser of the year. All proceeds support the museum and its programs in education, research, and collections. MNA is a private, nonprofit 501(c)(3) educational organization that receives no regular tax-based funding. Support from donors and members is essential to ensuring MNA's bright future.

A selection of the original fine art up for bid in the live auction will be on display in the Museum at the Katherin L. Chase Gallery from June 3 through June 22.

If you are unable to attend but would like to bid on a piece, contact the Museum's Development office and request an absentee bid form: 928.774.5211, ext. 227, or [development@musnaz.org](mailto:development@musnaz.org).

**Note:** *The lot order listed in this online catalogue does not reflect the actual auction order during the event. Lots in the catalogue are as of May 26, 2016.*



## **CODY DELONG**

### ***Evening Reflections***

Oil on canvas, 18 x 24 in.

An attendee of the Loveland Academy of Fine Arts and Scottsdale Artists School, Cody DeLong considers himself a lifelong student of art. In recent years, DeLong has been invited to several Museum shows, including; The Phippen Museum in Prescott, AZ. (Several times), The Museum of Northern Arizona in Flagstaff, AZ (several years for their annual art auction where he has been a top seller), and The Pearce Museum in Corsicana, Texas. DeLong now divides his time between his Jerome, AZ Studio/Gallery and plein-air work. In 2007, Cody won the Artists Choice Award at the Plein Air New Mexico event in Santa Fe. In 2008 Cody won a Vasari Award at the Sedona Plein Air Festival. He also won Best in Show at the Plein Air Painters Annual Members Show in 2009. In 2010 DeLong won First Place at Paint the Aspens plein air event, and he made the 2010 Paint the Parks Top 100. In addition, DeLong has been featured in many magazines and books and was awarded scholarships both for teaching and his artwork. DeLong is a founding member and former Vice President of the Arizona Plein Air Painters.

*“Evening Reflections is a painting based on Trout lake near Telluride CO. I camped there for a few days to do some plein air studies. On the evening I was about to leave, a storm rolled in, the low light got under the clouds and lit up the background mountain. I got a couple of great photos, and combined with my onsite studies gave me the reference for this painting.”*



**ED MELL**

***Blocking the Sun***

Oil on Linen Board, 11 x 14 in., 2016

Born in 1942, Ed Mell spent an idyllic childhood in what was then the small western city of Phoenix. He attended the Art Center College of Design in Los Angeles, California and soon after graduation accepted a position in New York as an art director for a large advertising agency. Seeking a break from the city's pace, he became a teacher on the Hopi reservation in 1970. Time spent on Arizona's Colorado Plateau reconnected Mell with the land he loved and his artistic course was set. He relocated to Phoenix and began painting his well-known landscapes.

Mell's modernist approach recalls Cubist principles of space, while his luminous color elicits a surreal sense of other-worldliness embodied by the desert. Like the distilled Western vistas of acclaimed artist Maynard Dixon, Mell abstracts his images of nature to intensify a scene. His paintings are celebrations of color and space that exalt the microcosm and the macrocosm of the West. Ed Mell was the featured artist of MNA's 2010 Gala and summer art exhibit and most recently was honored as the selected artist for Arizona's Centennial postage stamp image. Ed Mell has won numerous awards and honors. His art has been exhibited at the Eiteljorg Museum of American Indian and Western Art, Scottsdale Center for the Arts, Mesa Southwest Museum, and the Rockwell-Corning Museum of Modern Art. His paintings and sculptures are included in the collections of Tri-Star Pictures, Phoenix Art Museum, Museum of Northern Arizona, and Kartchner Caverns State Park, and private collections including Diane Keaton, Bruce Babbitt and Arnold Schwarzenegger.



## DAWN SUTHERLAND

### *Vermillion Glow*

Oil on Linen, 12 x 16 in., 2016

A founding member of Arizona Plein Air Painters, Dawn Sutherland is a painter of Southwest landscapes. In 2004, after years as a teacher, then college counselor, Dawn and her husband settled in Flagstaff. Here she and her paintbrushes met a new challenge of intense blue skies, distant horizons, and quilts of wildflowers blanketing the earth. Sutherland participated in the 2014 Sedona Plein Air Festival and the 2014 Grand Canyon Celebration of Art. Besides the Arizona Plein Air Painters, Sutherland is a member of The Nature Conservancy, Grand Canyon Association, International Crane Foundation, Best Friends, and Morris Animal Foundation

*"Painting outdoors, en plein air, uniquely captures the depth, definition, and feeling of the landscape before me. I feel there is almost always a near perfect composition provided by nature. Sometimes a scene calls out loudly to be painted; sometimes I hear only a mere whisper. These are the images that find their way to my heart and my canvas."* – **Dawn Sutherland**



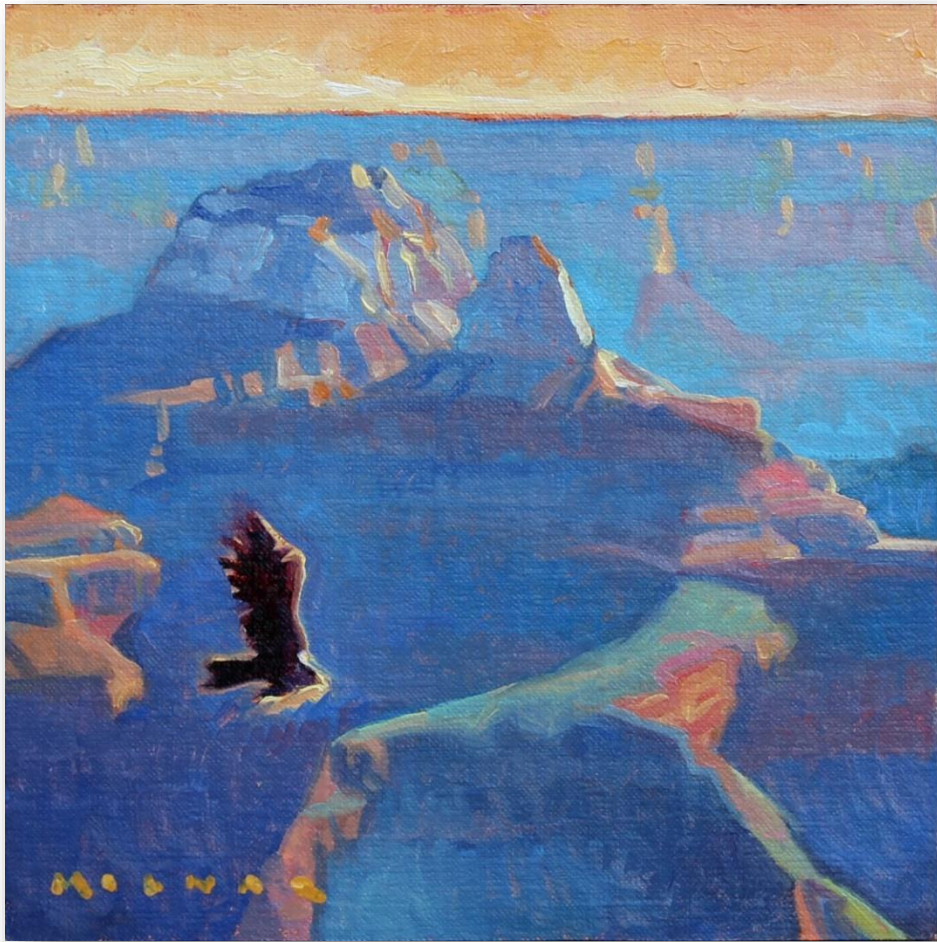
**LINDA GLOVER GOOCH**

***The South Rim – Grand Canyon***

Oil on Linen, 8 x 8 in., 2016

A westerner her whole life, Linda Glover Gooch grew up in the warmth of the southwest. Spending time as a child playing in the orchard groves, washes and arroyos of Southern California, Linda developed a love of the desert and canyons. While she is the first professional painter in her family, both of her parents and her grandmother were amateur artists. Painting since her early teens, Linda embraces the vast canyons that stretch across the West. Multiple trips and many hours on location bring new inspiration as each day reveals different light and weather conditions. The grandeur and ever-changing moods of the southwest are a constant source of study and an important part of her continued growth as an artist.

Linda's work has been featured in Art of the West and Southwest Art magazines and is on display in several galleries. Her work is featured in the publication of Art of the National Parks, Historic Connections, Contemporary Interpretations, a showcase of America's finest artists who paint from within the country's National Parks. Linda continues to share her gift and enthusiasm by teaching workshops across the country.



**MARCIA MOLNAR**

***Flight of the Condor***

Oil on Linen, 6 x 6 in., 2016

Marcia lives in Prescott, AZ with her artist husband George Molnar. Together, they explore and paint Arizona ranch life as well as the Grand Canyon. Their two children have moved to NYC which explains why Marcia spends so much of her time there. Marcia's formative years were spent in her father's gallery in Carmel. She moved on to do commissioned portraiture for many years and then landscape. Today she prefers to paint a combination of all her experiences, from ranch life to Grand Canyon to NYC. Marcia shows in Mountain Trails Gallery in Sedona, AZ

Presently, Marcia Molnar's life is one of contrasts. In summer, she camps and paints plein air on the rim of Grand Canyon and at other times, she finds herself in NYC wandering through the Met, the MOMA and Central Park. It is definitely beginning to affect her work. Marcia explains,

*"I have never settled into one style or limited myself to one subject. Having the opportunity to spend time in two different places during the year has encouraged me to try new things. As an artist I find New York City to be as breathtaking as Grand Canyon at sunset and going through the museums, Cy Twombly's work is as thought provoking as Edgar Payne's paintings are beautiful. I can see things riding the subway or on a ranch that capture my imagination. Perhaps it is being immersed in a life force so different than my own that leaves a lasting memory of light, movement, and color. The random experience has the power to evoke an emotion and then become a painting. It is by remaining flexible and open that I continue to grow as an artist and a human being. I can't wait to find the next inspiration wherever it is!"*



## MERRILL MAHAFFEY

### *Vishnu Reflection*

Acrylic on Canvas, 11 x 14 in., 2016

Merrill Mahaffey was born in 1937 in Albuquerque New Mexico and spent his childhood in Grand Junction, Colorado. As an avid outdoorsman, Mahaffey has redefined the great western landscape with his brush. He has climbed, skied, rafted, fished, rode horseback and strolled through the subjects of his paintings.

The monumental landscapes form Mahaffey's palette and canvas reflect his high standards of craftsmanship, exploration and invention in a style that is ever evolving. Bridging realism and modernism, he has refined a link between aesthetics and environmental concerns. Merrill Mahaffey has become one of the leading Western artist of our time who continues to lead the way for new generations of artist-explorers.

Mahaffey completed his formal art education in California and Arizona, receiving his BFA from Sacramento State and MFA from Arizona State University. His works are in many collections worldwide including: the Smithsonian's National Museum of Art, the Metropolitan Museum of Art, the Phoenix Art Museum and the National Park Service.





**Gregory Hull**

***Hart Prairie***

Oil on Canvas, 16 x 20 in.

Gregory Hull is one of America's leaders in the field of contemporary realism, whose versatility and variety in subject matter are displayed in his outstanding works. His relentless pursuit of scenic locations has taken him from the high peaks of the Sierra Nevada range and the Rocky Mountains to the depths of the Grand Canyon, and has allowed him to vividly capture the magnificence of nature on canvas. Hull earned a Bachelor of Fine Arts and a Master of Fine Arts from the University of Utah where he met Alvin Gittins, an Academy-trained portraitist whose approach to art deeply influenced him. This philosophy of drawing and painting from life, and the study of human anatomy, gave him a solid foundation upon which he has achieved widespread acclaim.

Gregory Hull recently completed major commissions for Nestlé USA, the Kierland Westin Hotel and Spa, and the Meadows Del Mar Resort in addition to several important portrait commissions. He is represented in many significant private and public collections worldwide and has shown in many exhibitions, including "Arts for the Parks" and the "Gold Medal Exhibitions" of the California Art Club. Gregory Hull's solo exhibitions include the Redfern Gallery in Laguna Beach; Wally Findlay Galleries in Chicago, New York and Palm Beach; the John Pence Gallery in San Francisco, and the Medicine Man Gallery in Tucson and Santa Fe. His latest gallery association is with The Collector's Room at Garland's Navajo Rugs in Sedona.

Additional gala auction pieces include original paintings by Curt Walters and Elizabeth Black as well as a custom writing desk by Warburton Woods, and a Navajo weaving.

This catalogue will be updated with images and descriptions as they are received.

---

## THANK YOU SPONSORS

### Lead Plateau Sponsor



### Grand Canyon Sponsors



Lillian & James Reed

### Mesa Verde Sponsors

BlueCross BlueShield of Arizona

Kay & Kent Corbin

Janet & Ed Sands

Dean Taylor

### Kaibab Vista Sponsors

Hufford, Horstman, Mongini,  
Parnell & Tucker PC

Marjorie & Sam McClanahan

Beverly Lockett Miller

Christine Mollring & Jennifer Sands

Miller Russell Associates

NAU Office of the President

Northern Arizona  
Healthcare Foundation

Carol & Randy Schilling

### Underwriting Support

Kinney Construction Services

Grace Lau & Charles Tsui

National Bank of Arizona

---