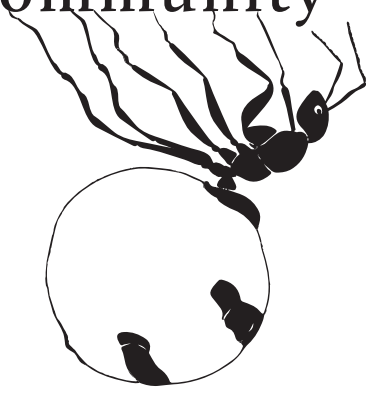


the ANT EMPIRE

Strength in Community



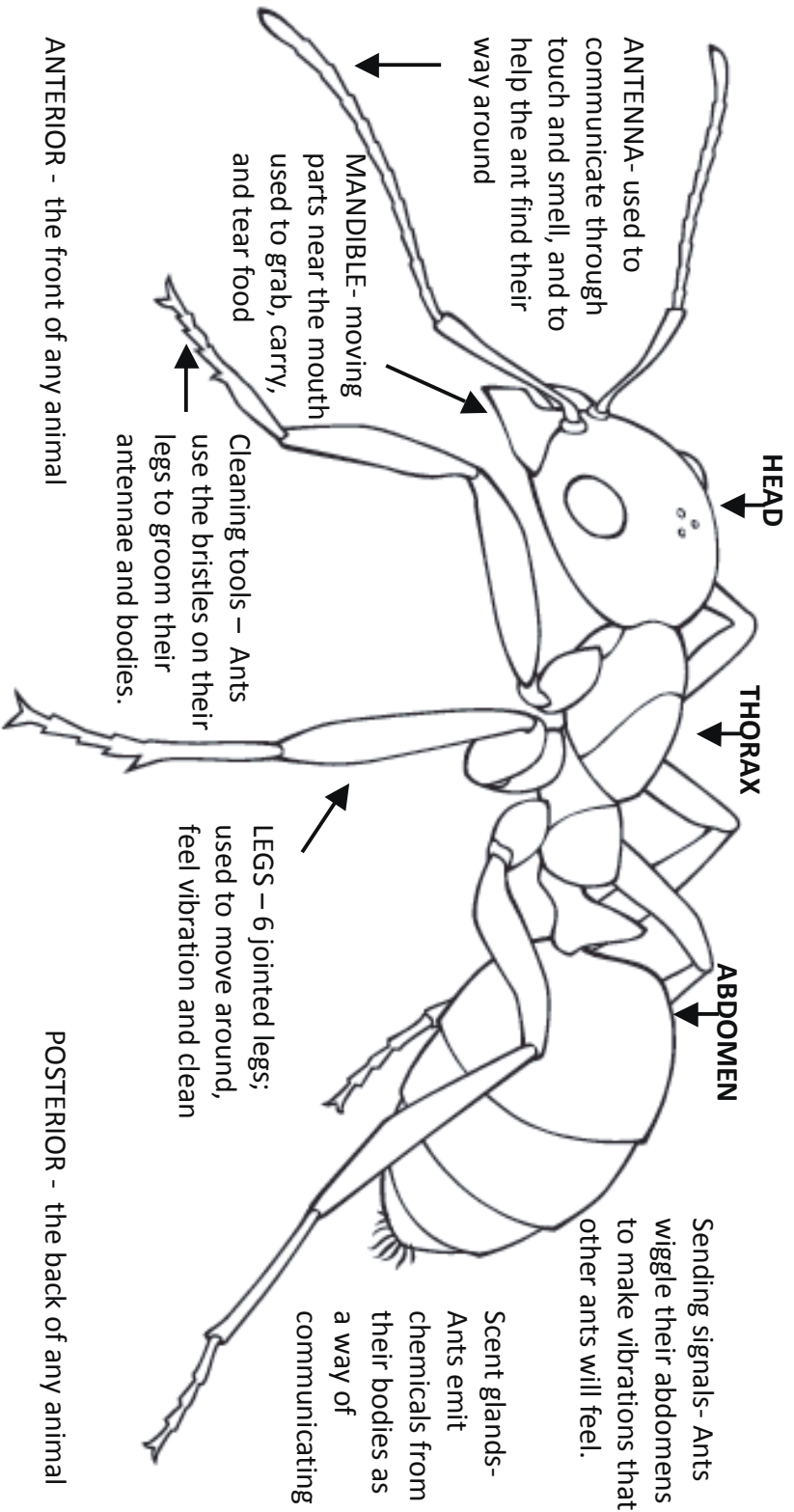
Lab booklet

My name _____

Be observant – Watch the ants.
Where do they go? What do they do?
Why do you think they do that?

Draw what you see:

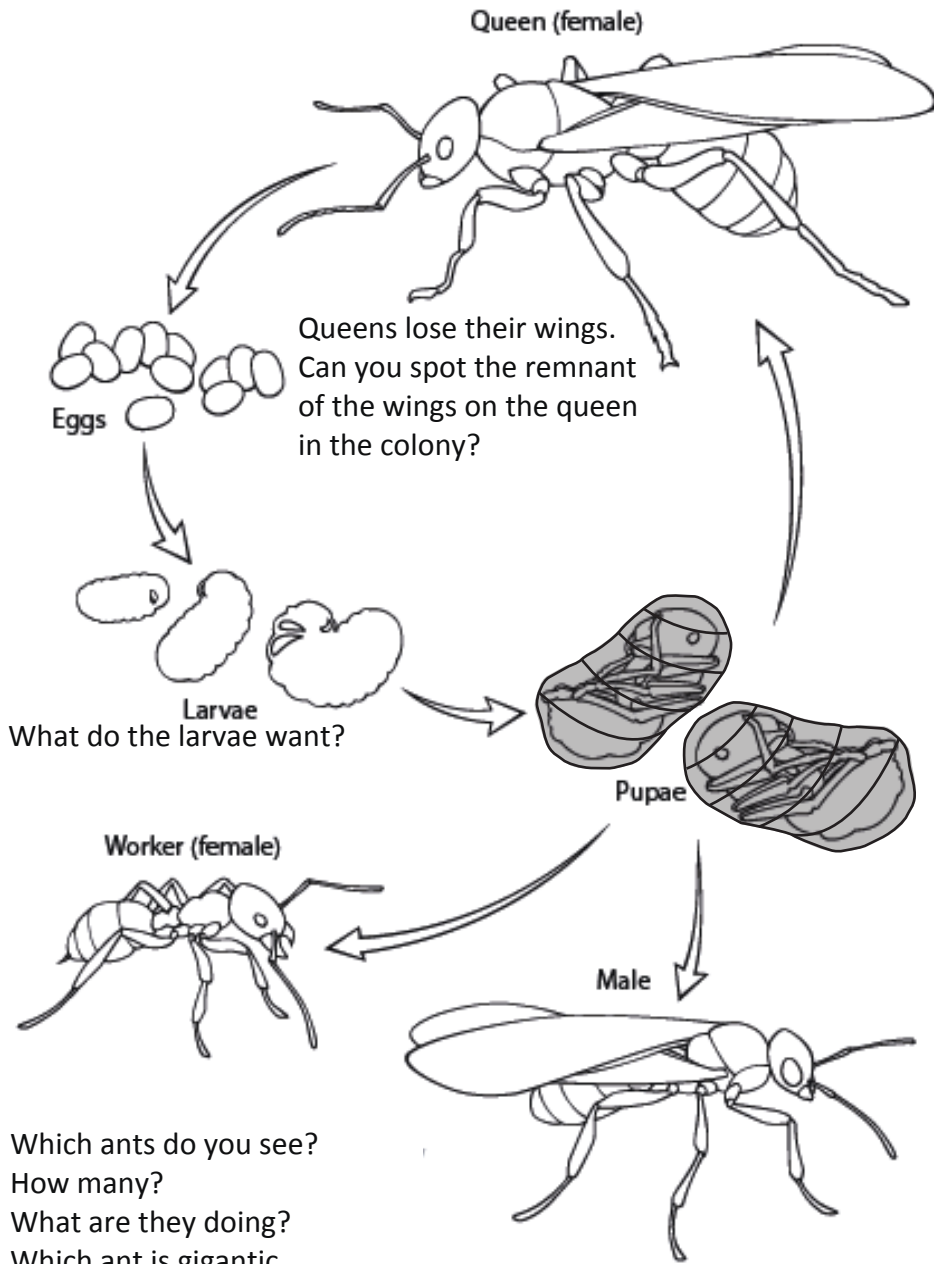
Ant Anatomy



EXOSKELETON – ants have a hard protective covering on the outside of their body.

Ant Lifecycle

Ants start as eggs laid by a queen. Those eggs grow into larvae and then become pupae. Most of the pupa come out of their cocoons as female workers, but a few will be males or new queens.



Which ants do you see?
 How many?
 What are they doing?
 Which ant is gigantic compared to the others?

I saw ants

- Wagging antennae
- Feeding each other
- Moving eggs or pupae
- Other _____
- Walking around
- Cleaning
- Eating

I was surprised by _____

This seemed most important _____

You may find yourself comparing ants to people. This is called anthropomorphizing. How are ants like people? How are they different?

When a scientist makes a guess based on observations, it's called a hypothesis. Based on what you have observed, can you anticipate what the ants will do next?

(Watch out for the antics of errant ants, whose behavior is antithetical to the others)

WORD GAME: The word "ant" shows up inside many other word. Circle every word in this booklet containing "ant" Can you think of other "ant" words?