

# Junior Paleontologists Journal – Week 10



Welcome back Junior Paleontologists!

## Ice Age mastodons and mammoths

During the Ice Age, North America looked like Africa, with elephants, camels, extinct forms of horse, llamas, saber-tooth cats, lions, and strange animals called tapirs, ground sloths, and glyptodonts. We know these animals from fossils, including important ones from our area.

Two kinds of elephants lived in North America. One, the **mammoth**, is a close cousin to today's elephants in Africa and Asia. The other, called the **mastodon**, is an extinct line of elephants that was different from mammoths. They both lived in Arizona. You can tell them apart by their teeth.



Mammoth (left) and Mastodon (right)

Wikipedia: Dantheman9758

The mammoth in our area is called the **Columbian Mammoth**. It is the largest of all the mammoths, even larger than the African elephant. The **Woolly Mammoth** lived farther north and was smaller.



Mammoth tooth in MNA Geology Hall showing enamel ridges.

Mammoth lower jaw with one tooth on each side. The enamel ridges are for grinding food.

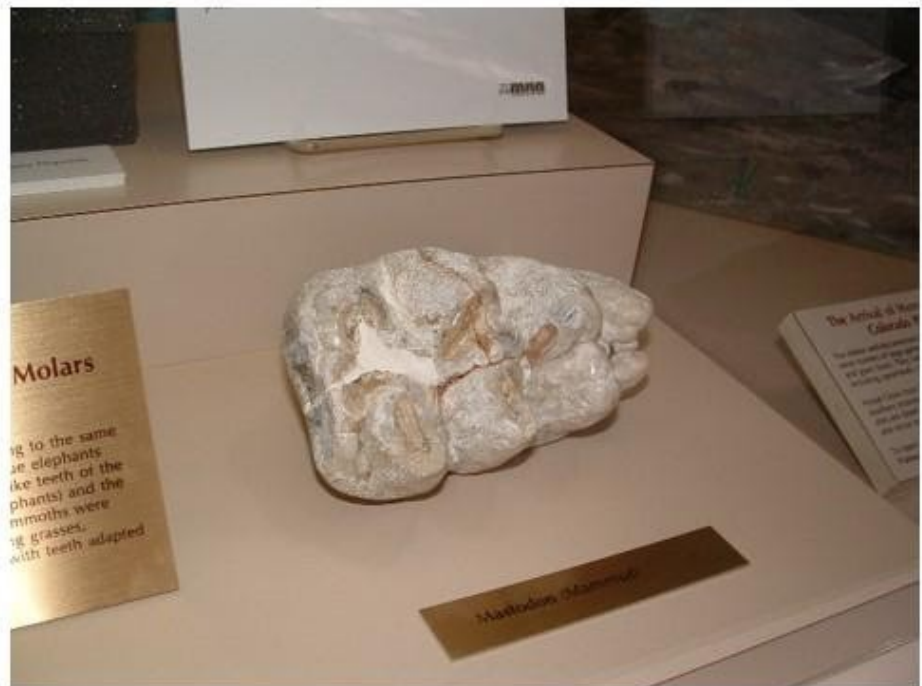


Dave Gillette, British Museum (Natural History)



Mastodon jaw with teeth, MNA Geology Hall

Mastodon  
tooth,  
MNA  
Geology  
Hall

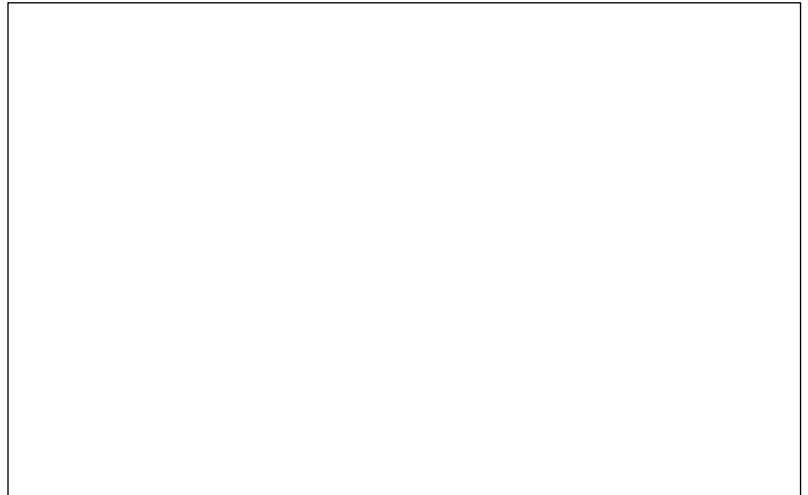


Mastodon lower jaw from the side, showing one tooth.



Dave Gillette, British Museum (Natural History)

**Dinosaur Detectives:** Can you figure out why mastodons and mammoths have such different teeth? (Answer on pg. 5)



Mastodon painting in MNA Geology Hall.



Mammoth painting in MNA Geology Hall.

This is a photo looking down at an excavation of the Huntington Mammoth in Utah. It was a complete skeleton. The skull was so big we had to protect it with plaster.

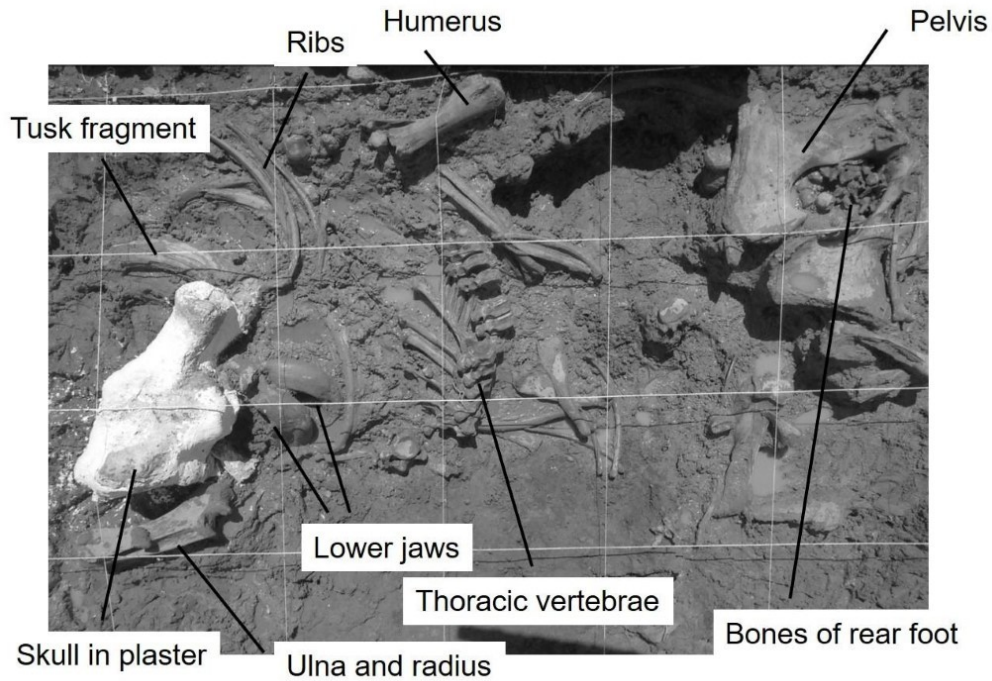


Photo by Dave Gillette, 1988

This is the skull of the Huntington Mammoth lying on its side in the mud of an Ice Age bog before we covered it with plaster and burlap.



(Answer to pg. 4 question: they ate different food. Mammoths ate mainly grass; mastodons ate mainly leaves from trees).

**Dinosaur Artists:** can you make a drawing or a painting of a mammoth or mastodon? Or can you write a story or poem?

A large, empty rectangular box with a thin black border, occupying most of the page below the text. It is intended for a student to draw a mammoth or mastodon, or to write a story or poem.