

# The end of the day at MNA

*All the objects in this story are in the Museum of Northern Arizona, so this story is also a scavenger hunt. To help you find the objects, there are hints telling you which gallery each object is in.*

It was the end of the day at MNA...

"That was the best,"  
said the last guest.

"Thanks for the toy,"  
said the small boy

"We're on our way,"  
said gals in gray.

"OK, Bye-bye,"  
said the desk guy.

"See you later,"  
said the *curator*.



Then off went the light  
Click went the door  
All was locked tight  
and quiet on the floor.





"Let's play,"  
said the *display*.



*Hint: Look in Geology for  
items on the next few pages.*

"Hear me roar!"  
yelled the dinosaur

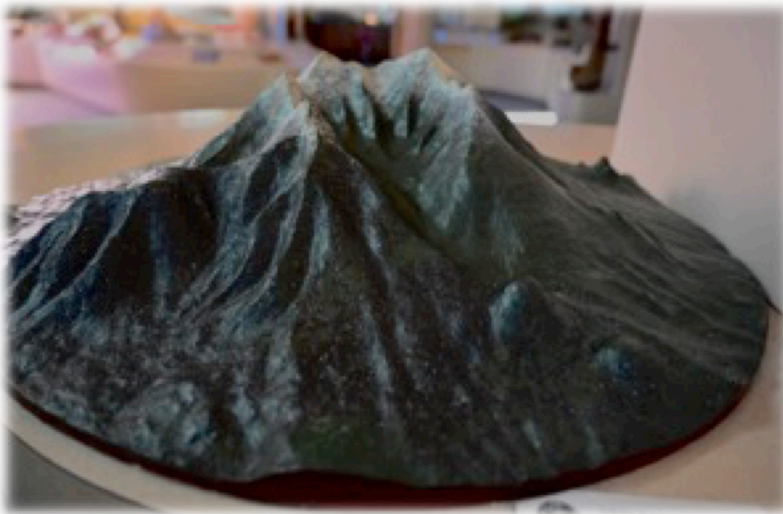




"Don't jostle,"  
said the *fossil*.



"Watch me blow!"  
said the *volcano*.



Hold on tight!"  
said the *meteorite*.



----

In the rumble and ruckus the space rock went zoom,  
zipping round and round, 'til it hit with a boom.

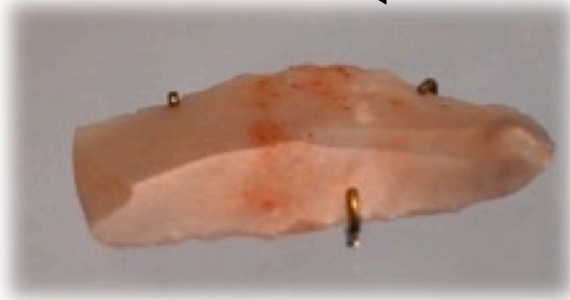
The olla jar teetered, toppled and fell  
with a crash to the ground and a loud yell.



*Hint: Look in Archaeology  
for the olla jar and the  
next few items*



"Did she break?"  
asked the stone *flake*.



"Yes indeed,"  
said the turquoise *bead*.



"We should have known,"  
said the *bone*.



"I'm going to tattle,"  
said the *rattle*.



*Hint: Look in the Native Peoples of the  
Colorado Plateau gallery center table*



"Don't do that,"  
said the *hat*.

*Hint: You'll need to look  
in the shop for the hat*

"I'm going to weep,"  
said the *sheep*.



"Give her a hug,"  
said the Navajo *rug*.

*Hint: Look in the Navajo section of the Native Peoples  
of the Colorado Plateau for the sheep and rug*







"Don't despair,"  
said the Zuni *bear*.

*Hint: This Zuni fetish is  
in the Babbit Gallery*



"Call the doll,"  
said the woven *shawl*.



"Yes, of course,"  
said the *horse*.

*Hint: This clay figurine is part of a display in the Navajo section of the Native Peoples of the Colorado Plateau.*

"By all means!"  
said the *beans*.







"But I'm small,"  
said the Hopi *doll*.

*Hint: This katsina doll is displayed in the Archaeology Gallery as part of a timeline. The beans above are in the same timeline.*

"We'll lend a hand,"  
said the *band*.



*Hint: These instruments are among the activities in the center table of the Native Peoples of the Colorado Plateau gallery*

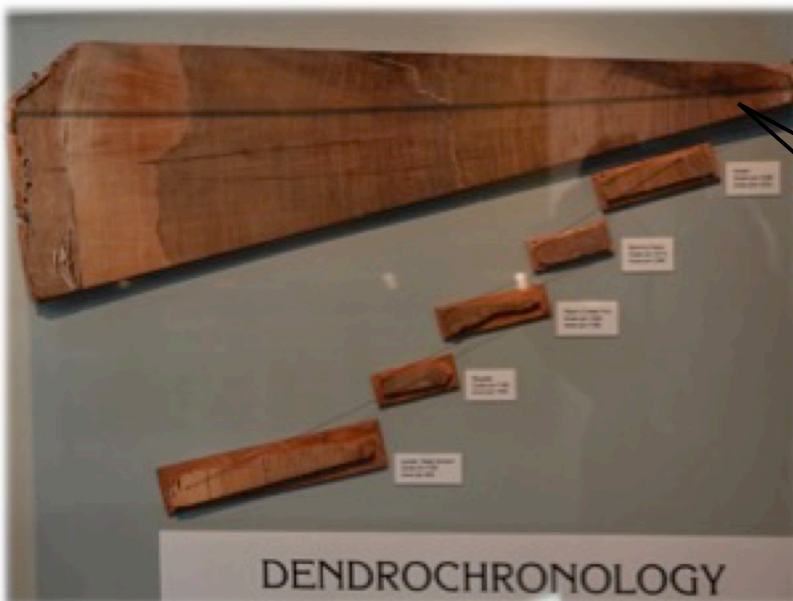
Hint: The following items are found in the Archaeology Gallery.



"Lift her up,"  
said the *cup*.



"Grab the handle,"  
said the *sandal*



"Use some string,"  
said the *tree ring*.



"All aboard,"  
said the *yucca cord*.

"She's airborne!"  
exclaimed the *corn*.



"It's very far,"  
said the jar.



"Be brave,"  
said Tim's Cave.



*Hint: Look in the  
Babbitt Gallery for the  
display of pottery found  
in Tim's Cave.*

"You're on a roll,"  
said the *bowl*.



"You'll be here soon,"  
said the *spoon*.



"We saved you a spot,"  
said the old *pot*





When the door opened and on went the light.  
All was calm and the shelves were put right.  
But the curator did wonder, as he dusted the cases  
Why one or two things, were not in their places...



A **curator** is the person who chooses what will be in the museum.

A **display** is where things are put in the museum.

A **fossil** is the preserved remains of animals or plants that were once living.

A **volcano** is an opening in the earth where hot gases and melted rock erupt.

A **meteorite** is a rock that fell from space and landed on Earth.

An **olla jar** is used to store water or food.

**Stone flakes** were tools used for cutting or hunting. They were created by chipping at rocks to create sharp edges and points.

**Bones** from animals were used to create tools and instruments.

The **Zuni bear** is a carved stone figurine, called a fetish.

The **woven shawl** is the outfit worn by a Hopi bride during her wedding.

**Hopi katsina dolls** are carved to represent the katsinam, the spirit messengers of the universe and given to children as a teaching tool.

**Tree rings** are lines formed each year as a tree grows. The rings vary in thickness depending on how well the tree was able to grow that year. Scientists are able to use the rings to know how old the tree was and what the weather conditions were like during each year of that *tree's* life.

**Yucca cord** was made out of fibers from the yucca plant which were twisted to make a strong string or rope. That cord could be used to make other things, including sandals.

**Tim's Cave** is a location where a number of large pottery jars and some baskets were found in 1991.



MUSEUM of  
NORTHERN  
ARIZONA

Come visit and see all the objects in this story.  
Museum admission is free for children 9 and under.  
Reserve your tickets at [musnaz.org](http://musnaz.org)